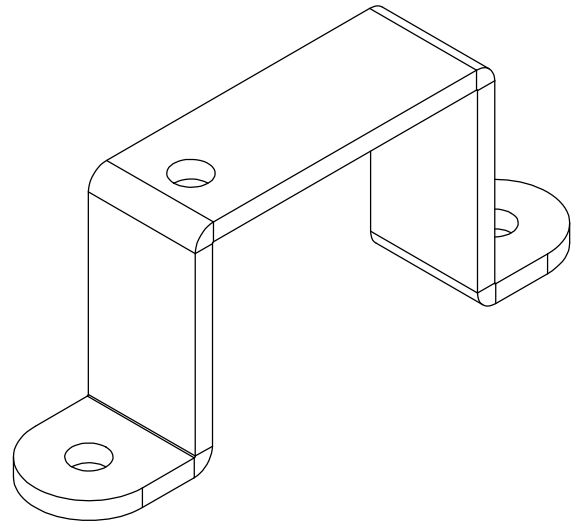



SEC. P-P



T = 1.6 mm

- NOTE :
- UNLESS OTHERWISE SPECIFIED, GENERAL TOLERANCES ARE:
0 – 20mm : ± 0.1
21 – 50mm : ± 0.2
51 – 100mm : ± 0.3
101 – 150mm : ± 0.4
 - * INDICATES CONTROL DIMENSIONS.
 - MATERIAL CODE : SECC OR SPCC, THICKNESS = 1.6mm
 - BURRS SHALL NOT EXCEED 0.05mm.
ALL BURRS THAT MAY RESULT IN INJURY SHALL BE REMOVED.
 - UNSPECIFIED CORNER RADIUS TO BE R0.1 MAX.
 - UNSPECIFIED INSIDE BENDING RADIUS TO BE R0.3.
 - ALL BENDING DIMENSION TO MEASURE AT THE TANGENT POINT OF THE BENDS.
 - MATERIAL USED AND PARTS PRODUCED MUST COMPLY ROHS REQUIREMENT.
 - SURFACE TO BE FREE FROM SCRATCHES, DIRT AND OIL.

MATERIAL: SPCC T=1.6				<div>• DO NOT SCALE DRAWING.</div> <div>• IF IN DOUBT, ASK.</div> <div>• ALL DIMENSIONS IN mm.</div> <div></div>	IR ROBOT			
PROCESS: Znc PLATING					(Private and Confidential) Copyright ©2013			
COLOUR: LIGHT BLUE					PART NAME : BRACKET B, IR-MB03&07			
	NAME	SIGNATURE	DATE	VOLUME [mm³] :	PART NO :		REV NO:	
DRAWN	YC KIM		2024.08.26		IRMIS0004		04	
CHK'D				WEIGHT [gf] :				
APPV'D					SCALE 2:1	SHEET 2 OF 2	A3	
6				7		8		